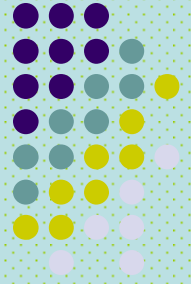


***CLIMATE PRODUCTS
GEARED TOWARDS RURAL
LIVELIHOODS***

GITAU Wilson
ICPAC

Overview



- **Activities**

- Climate data analysis and monitoring of evolving weather and climate extremes
- Generation of climate products
- Capacity building in generation and use
- Climate change detection and attribution
- Research in climate and related products
- Dissemination of climate information

- **Products**

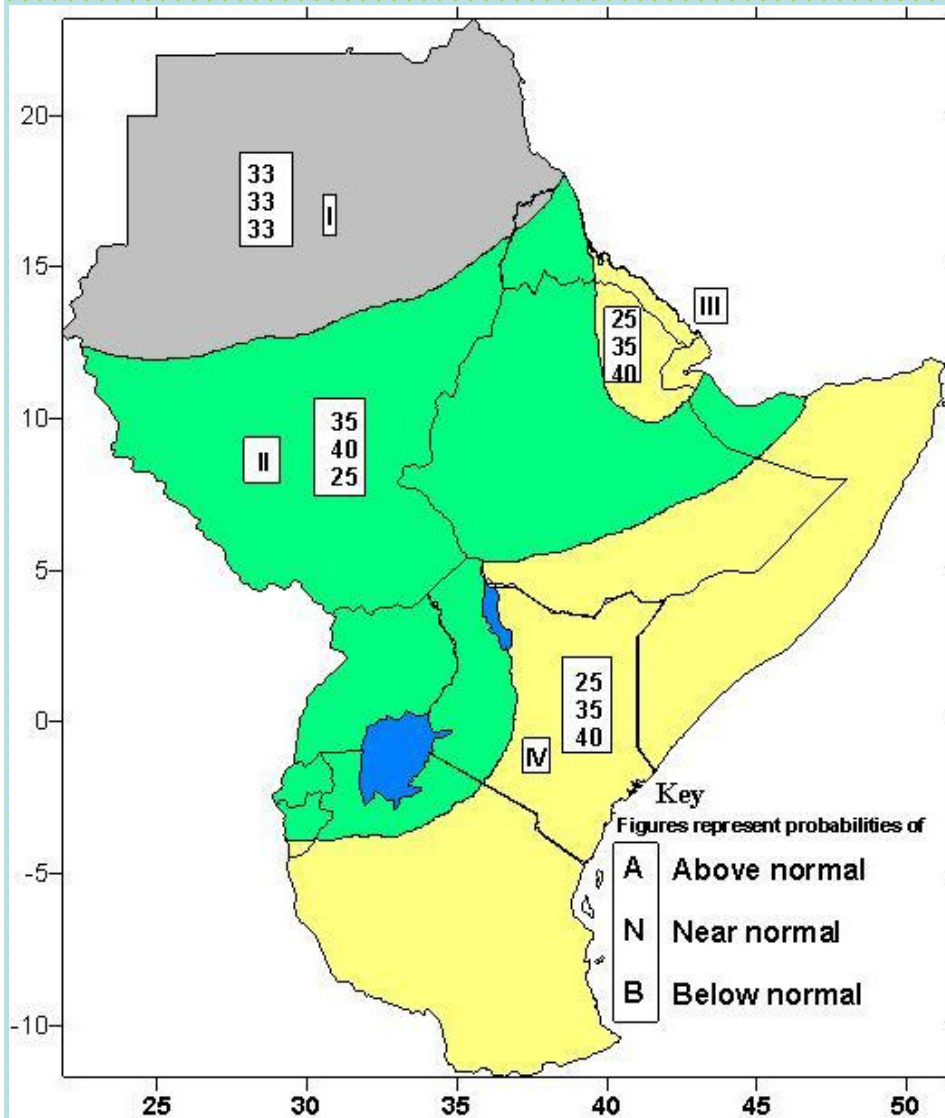
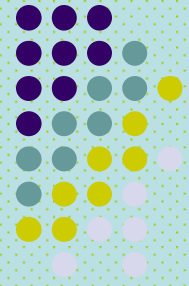
- Ten day, monthly and seasonal climate/weather bulletins
- Climate watch / El Niño updates
- Annual climate summaries

- **Domain**

- IGAD countries
- Non-IGAD countries (Tanzania, Rwanda, Burundi)

OUR PRODUCTS

(a) Seasonal Rainfall Outlook

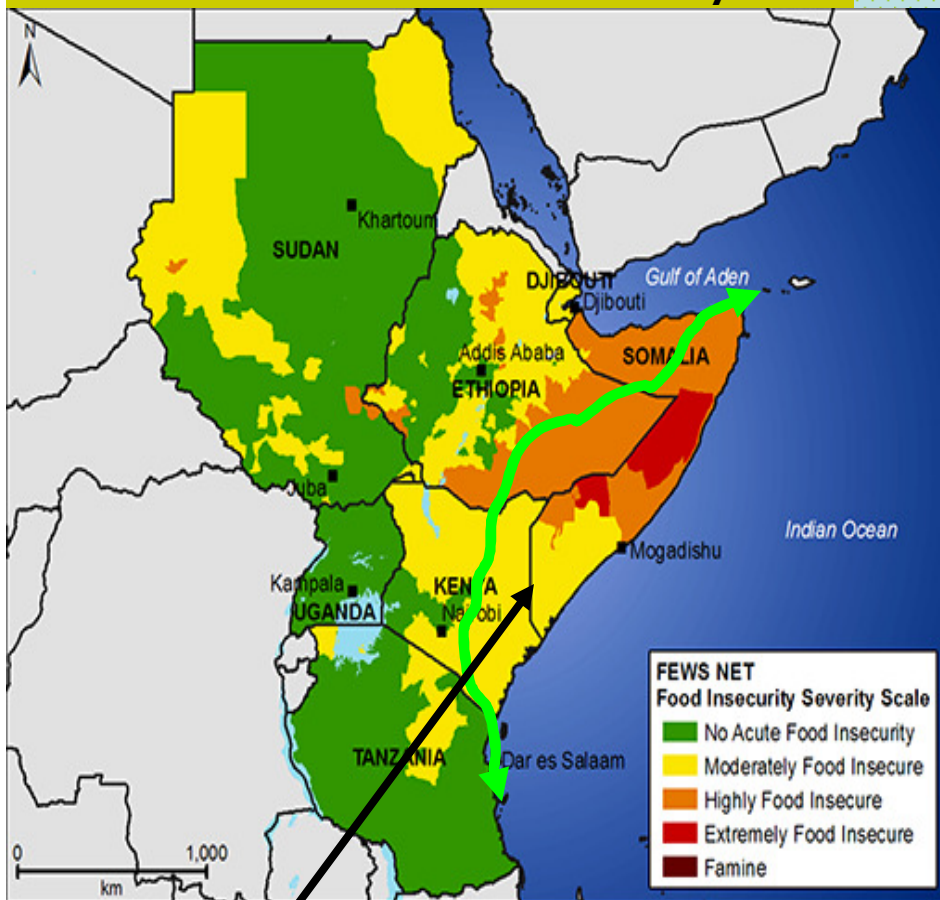


- Issued on 3 September 2010
- Increased likelihood of poor (sufficient) rainfall performance over the eastern (western) parts of equatorial sector (5° N/S)
- Downscaled to various sectors such as food security, energy, health, water etc

(b) E. Africa Food Security Outlook Scenario

Impacts of Food Insecurity due to La-Nina expected in early 2011, may worsen if MAM rains also fail..

FSO Scenario for Feb. 2011 & Beyond



Fragile livelihoods with history of prolonged Food Insecurity in the recent past....

Transitory Causes : (Mainly Climatic)

1. Moderate La-Nina event expected to adversely impact the fragile livelihoods in the eastern sector of E. Africa.

2. Impacts of Food Insecurity expected to be felt early 2011.

3. High commodity market prices are likely to increase in face of potential drought next year.

Underlying Causes: (Mainly Non-climatic)

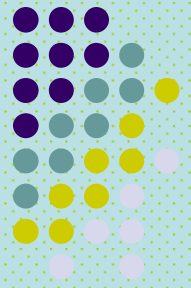
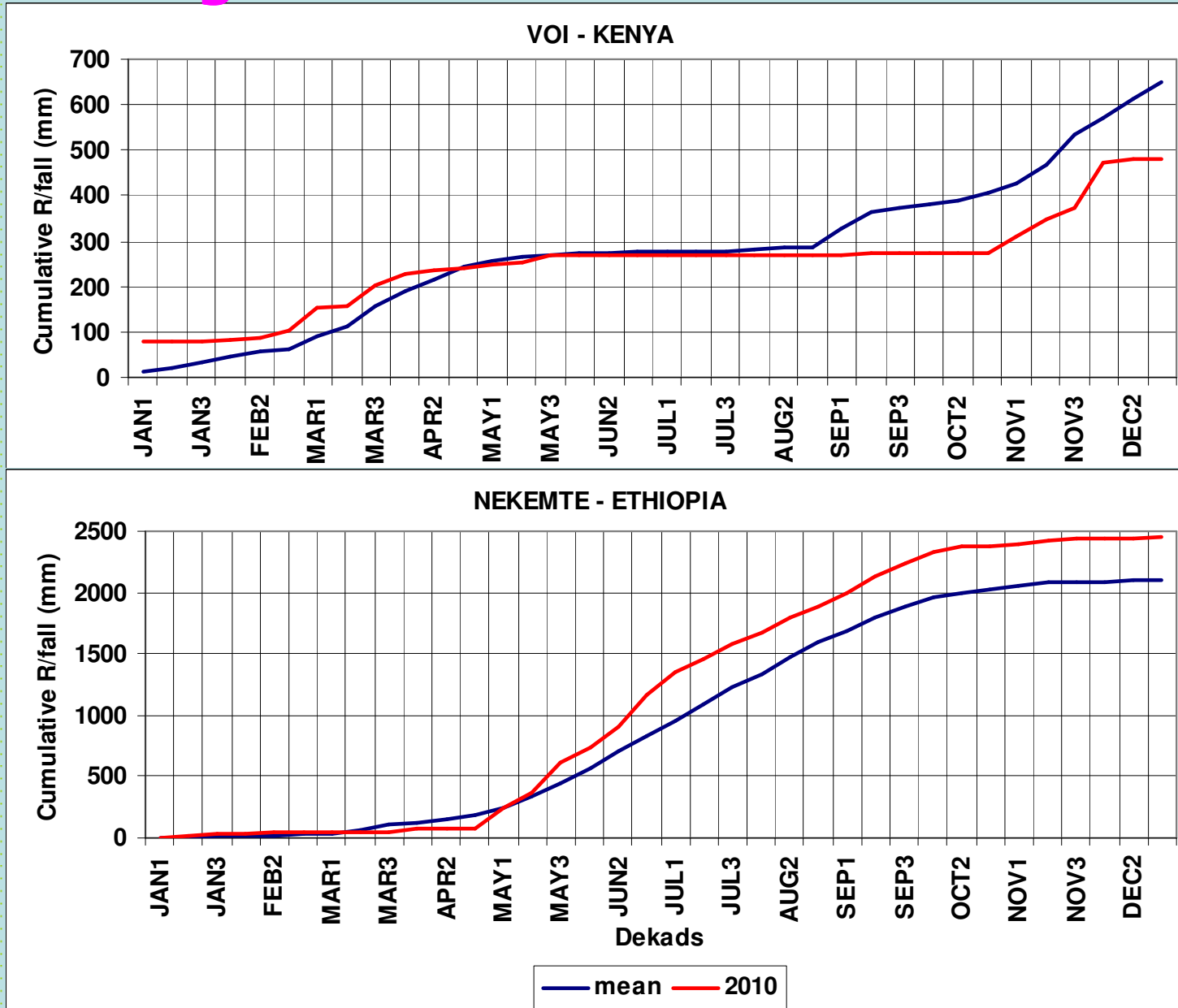
A. High pop. growth

B. Civil war/insecurity

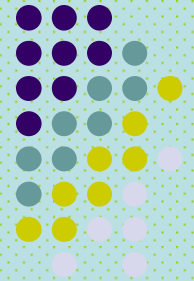
C. Poor marketing mechanisms

D. Chronic poverty

(c) Continuous monitoring and review prevailing climate and issue the forecast



Upcoming activities



- **CBTW for seasonal climate outlook and related workshops (21st – 26th February 2011) in Nairobi, Kenya**
- **Climate Outlook Forum (28th February – 4th March 2011) in Arusha, Tanzania**